



TAI-SAW TECHNOLOGY CO., LTD.

No. 3, Industrial 2nd Rd., Ping-Chen Industrial District,
Taoyuan, 324, Taiwan, R.O.C.

TEL: 886-3-4690038 FAX: 886-3-4697532

E-mail: tstsales@mail.taisaw.com Web: www.taisaw.com

Approval Sheet For Product Specification

Issued Date:

Product Name: SAW Filter 940.5MHz SMD 3.0×3.0mm

TST Parts No.:TA0460A

Customer Parts No.:_____

Company: _____
Division: _____
Approved by : _____
Date: _____

Checked by: _____ Elvis Chiu

Approval by: _____ Francis Chen

Date: _____ 2005/03/22



TAI-SAW TECHNOLOGY CO., LTD.

No. 3, Industrial 2nd Rd., Ping-Chen Industrial District,
Taoyuan, 324, Taiwan, R.O.C.

TEL: 886-3-4690038 FAX: 886-3-4697532

E-mail: tstsales@mail.taisaw.com Web: www.taisaw.com

SAW Filter 940.5 MHz

MODEL NO.: TA0460A

REV. NO.:1

A. MAXIMUM RATING:

1. Input Power Level: 10 dB_m
2. DC voltage: 3 V
3. Operating Temperature: -10°C to +75°C
4. Storage Temperature: -40°C to +85°C

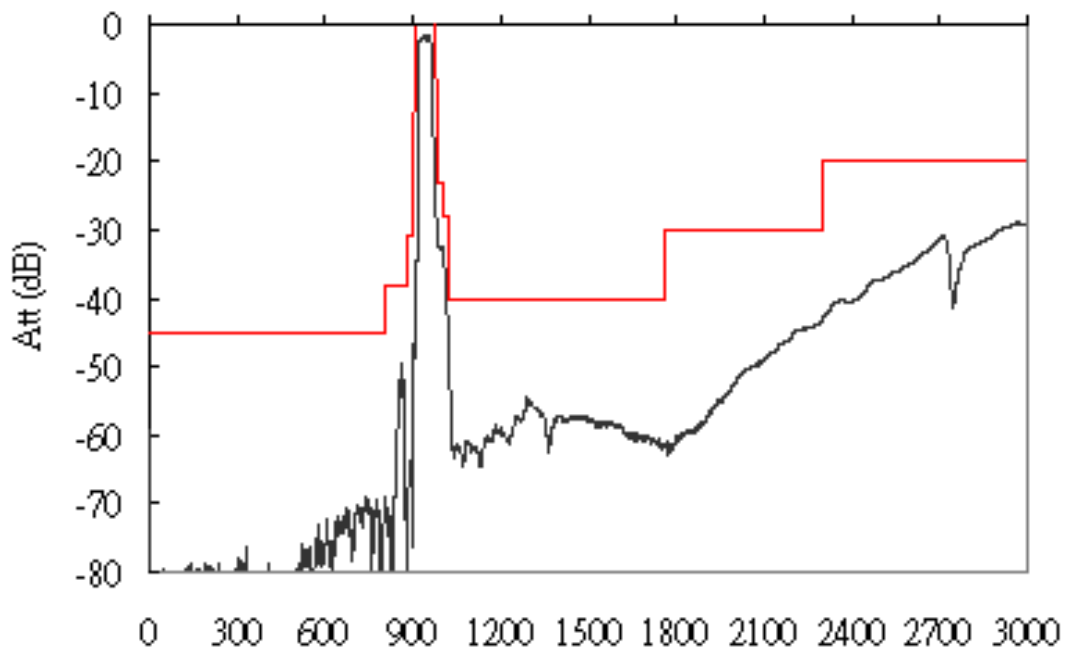
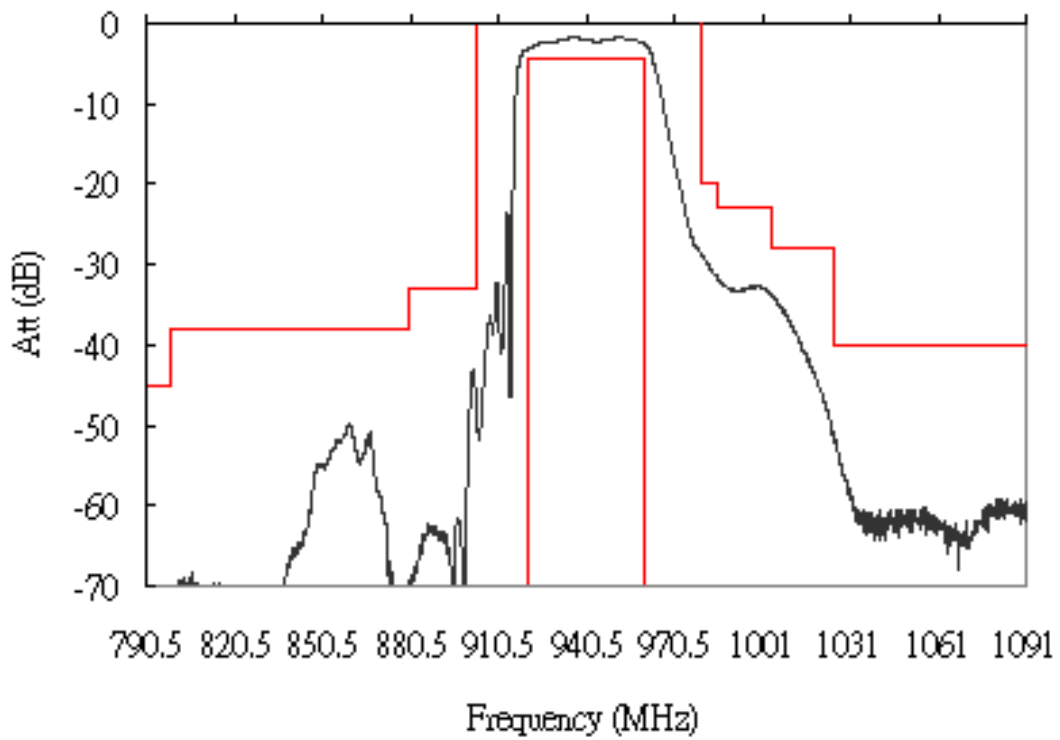
RoHS Compliant
Lead free
Lead-free soldering

B. ELECTRICAL CHARACTERISTICS:

Characteristics				Specification			Note
				Min.	Typ.	Max	
Center frequency	Fc	MHz	-	940.5	-	-	
Insertion loss	921~960 MHz	I.L.	dB	-	3.2	4.4	-
Ripple	921~960 MHz		dB	-	1.5	2.6	-
VSWR	921~960 MHz			-	2.0	2.6	
Attenuation: (Reference level from 0 dB)							
	0 ~ 800 MHz		dB	45	60	-	-
	800 ~ 880 MHz		dB	38	47	-	-
	880 ~ 902 MHz		dB	31	42	-	-
	981 ~ 985 MHz		dB	19	27	-	-
	985 ~ 1005 MHz		dB	23	28	-	-
	1005 ~ 1025 MHz		dB	28	33	-	-
	1025 ~ 1760 MHz		dB	40	50	-	-
	1760~ 2300 MHz		dB	30	39	-	-
	2300 ~ 3000 MHz		dB	20	27	-	-
Source Impedance				50Ω			1
Load Impedance				50Ω			1

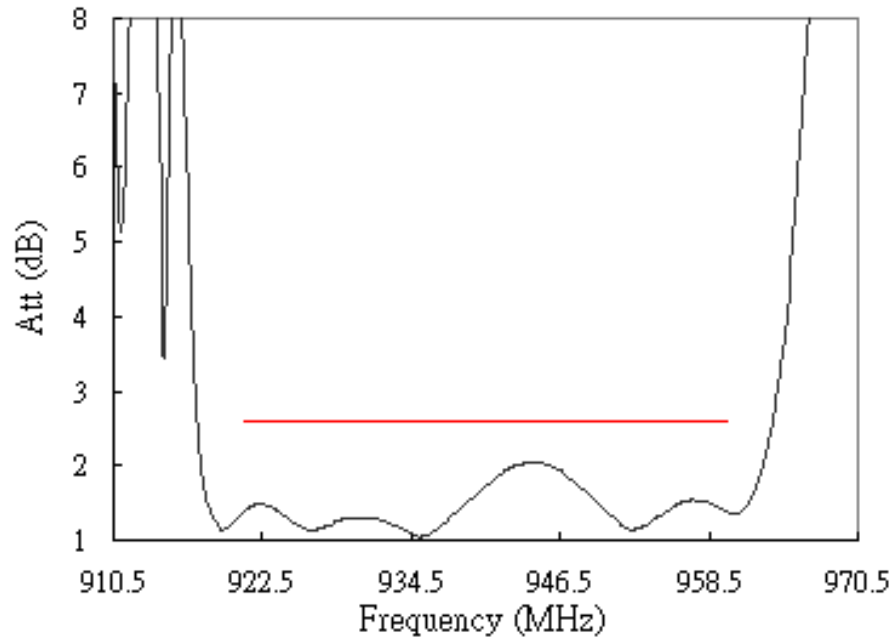
Note1. No matching network required for operation at 50Ω

C. TRANSFER FUNCTION :

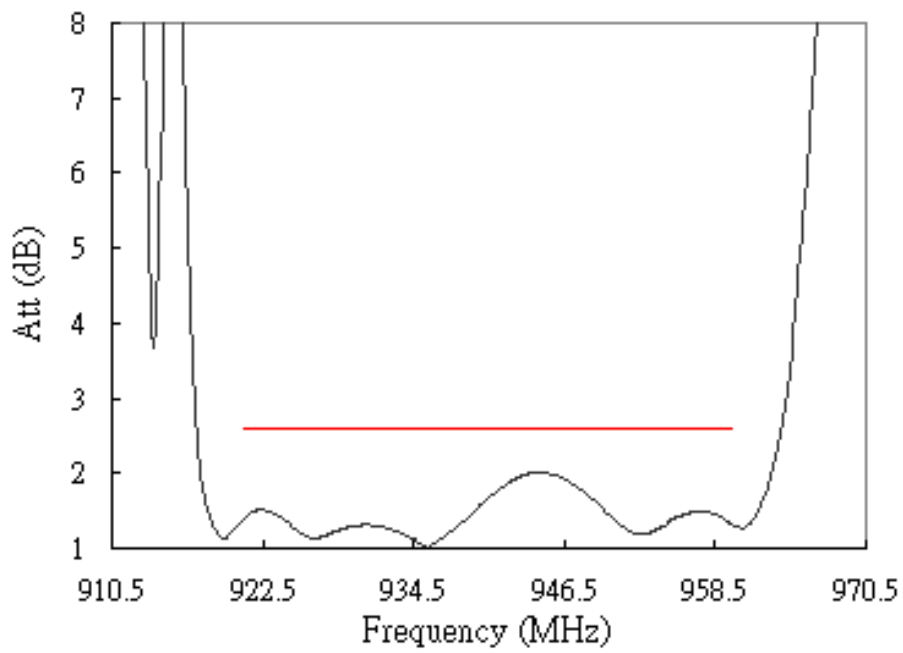


REFLECTION FUNCTION:

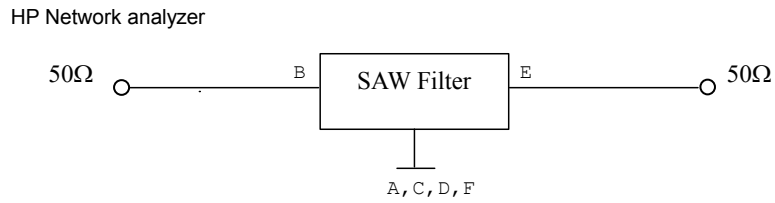
S11



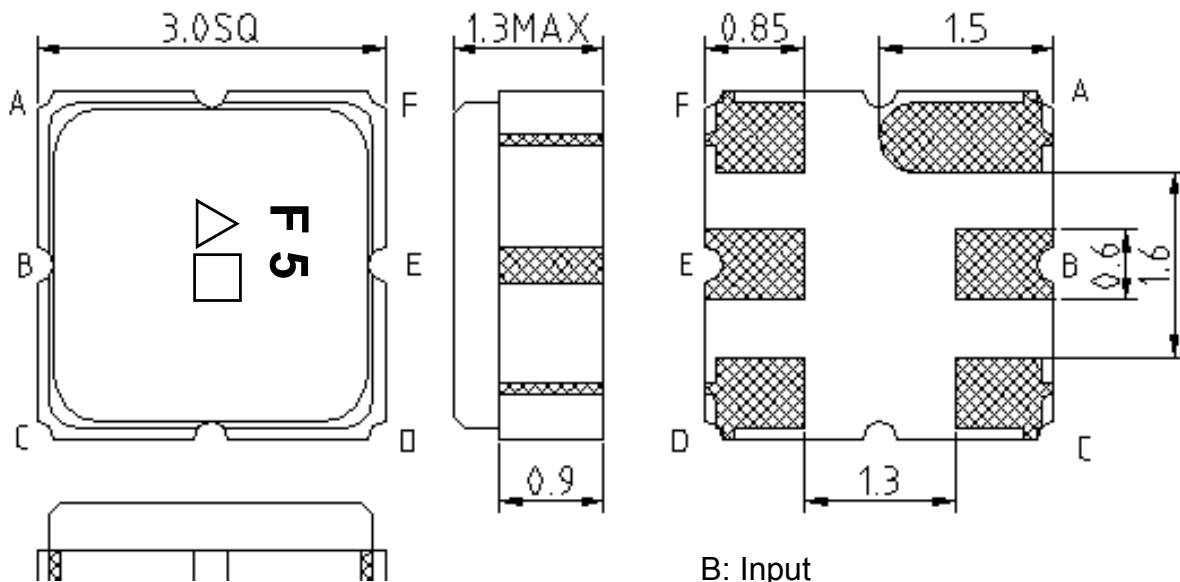
S22



D. MEASUREMENT CIRCUIT:

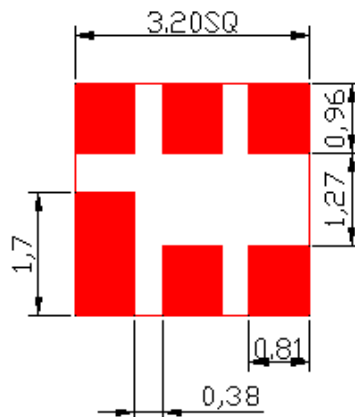


E. OUTLINE DRAWING:



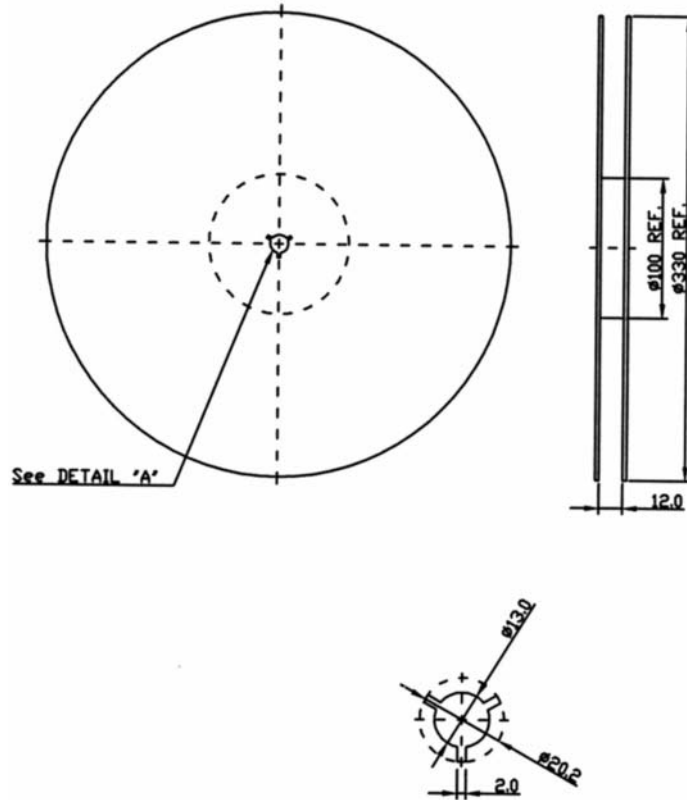
B: Input
 E: Output
 A,C,D,F: Ground
 △: Year code
 □: Date code
 Unit: mm

F. PCB FOOTPRINT:



G. PACKING:

1. REEL DIMENSION



2. TAPE DIMENSION

